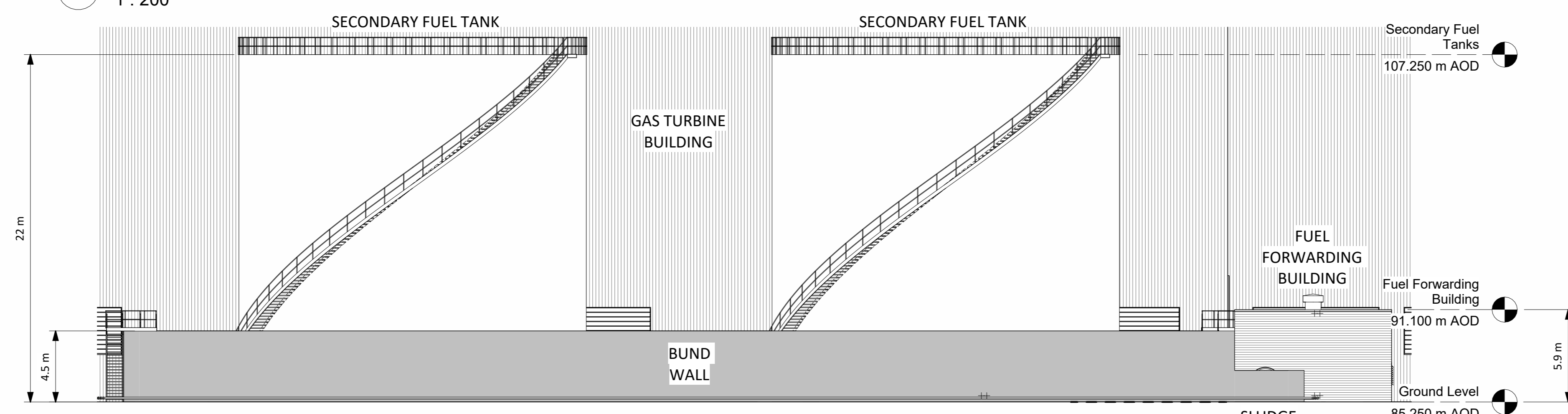
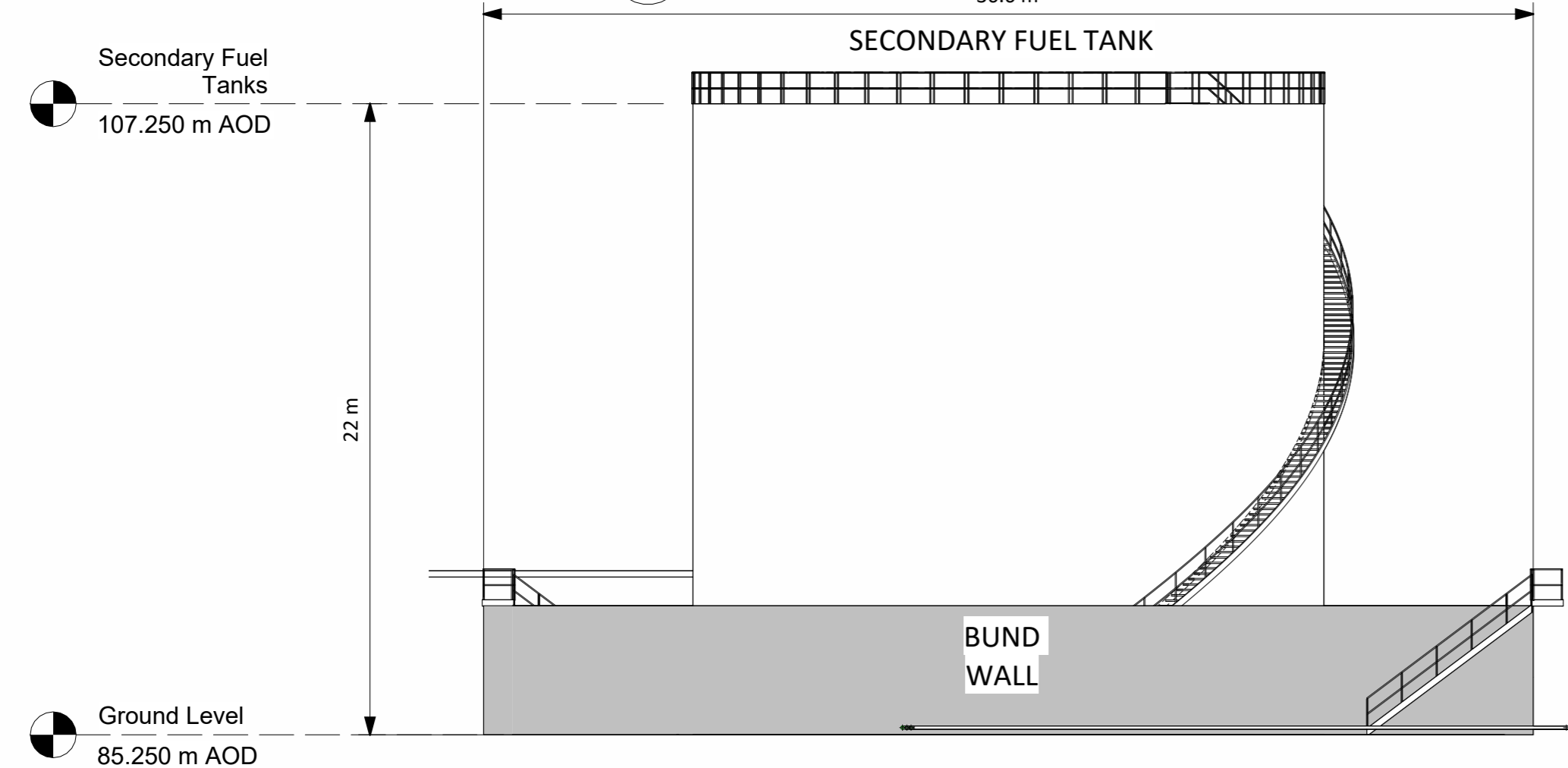


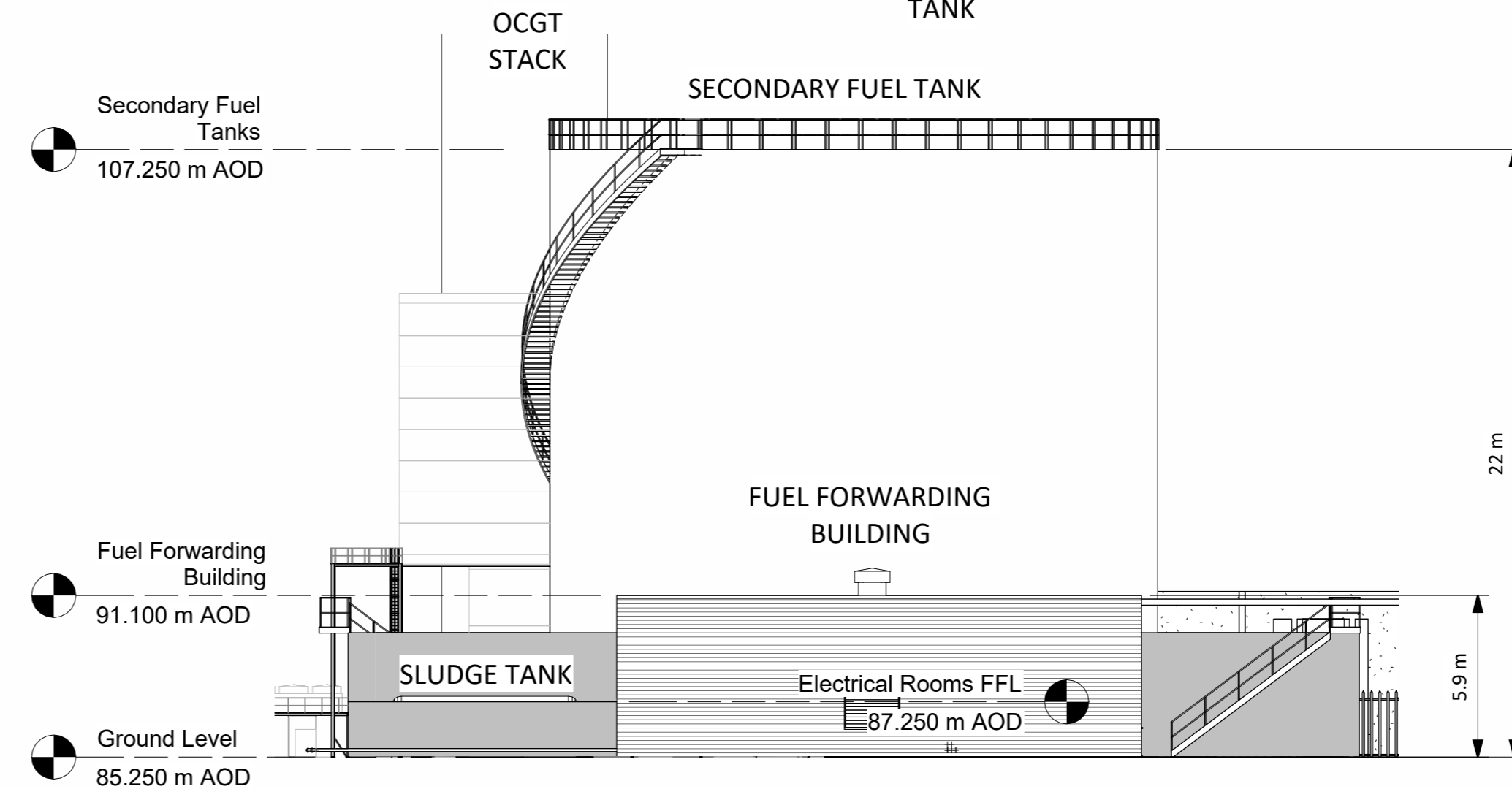
**1 Secondary Fuel Storage North**  
1 : 200



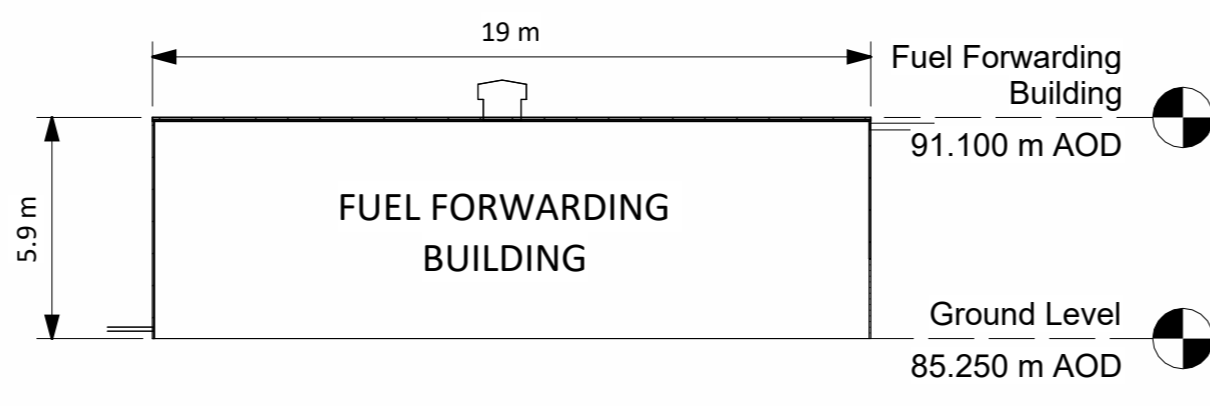
**2 Secondary Fuel Storage South**  
1 : 200



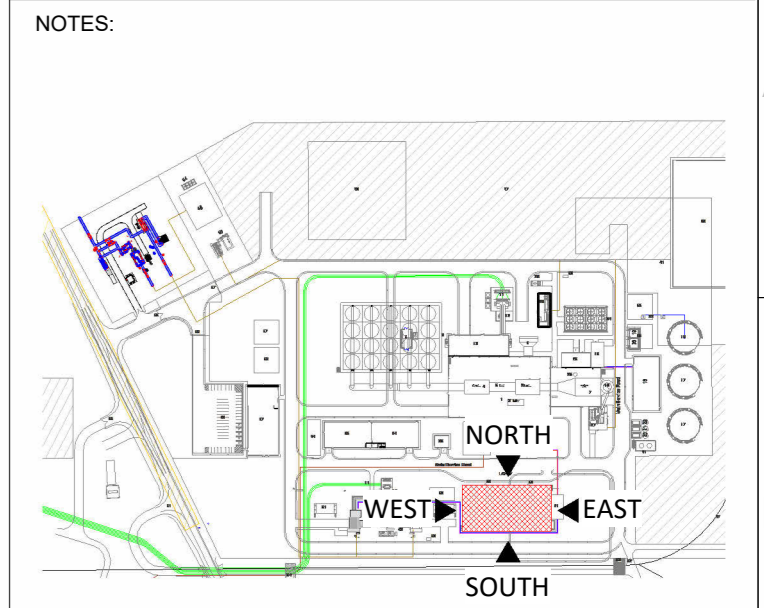
**3 Secondary Fuel Storage West**  
1 : 200



**4 Secondary Fuel Storage East**  
1 : 200



**5 Section A-A Through Fuel Forwarding Building**  
1 : 200



- NOTES:
- Building colours will range within a muted mid-dark grey and green spectrum. Refer to EIAI Vol. II, Appendix 10A for detail
  - Final detail of building finishes to be agreed with planning authority in advance of development commencing

R1.0	FOR PLANNING	DTW	AO1	BAB	26.01.24
REV.	DETAILS OF REVISION	DRAWN	CHKD	APR	DATE

**FICTNER**  
CONSULTING ENGINEERS LIMITED  
7 Sir John Rogerson's Quay, Block C,  
Grand Canal Docklands,  
Dublin 2, D02 VK60  
Tel: +353 (1) 506 0632  
Website: www.fichtner.ie

CLIENT: **Bord na Móna Powergen Limited**

SITE:

PROJECT: **Derrygreenagh Power**

TITLE: **SECONDARY FUEL STORAGE ELEVATIONS & SECTION**

DRAWN BY:	DTW	DATE:	26.01.24
CHECKED BY:	AO1	DATE:	26.01.24
APPROVED BY:	BAB	DATE:	26.01.24

FILENAME: **DUBLIN**

OFFICE OF ISSUE: **DUBLIN**

SHEET SIZE: **A1** SCALE: **1:200**

DRAWING No.: **S7060-8050-0019** REVISION: **R1.0**

